

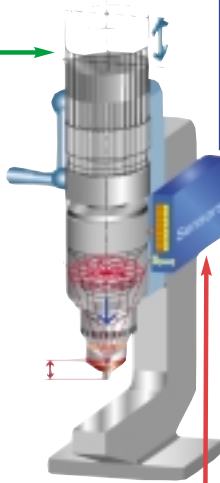
## Riveting machine control and process controller for all safety standards



**RC 20 Riveting machine control**  
 The RC 20 exceeds all present safety standards.

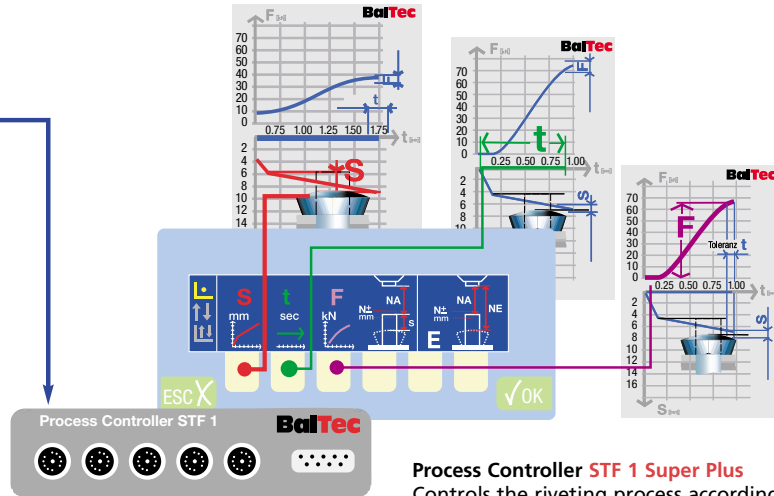
**Features**

- Display suitable for graphics.
- Menu operation with softkeys.
- Basic software for all machines.
- Input/output capabilities for riveting system components (slide logic, safety light curtains, rotary table).
- Machine and program configuration by means of setup functions.
- Good-piece counter.
- Bad-piece counter.
- Total-stroke counter.
- Operating-hours counter.
- Total-hours counter.
- Operator desktop and communications software for Quantum 2000 STF-1 process controller.
- RS 232 data interface.



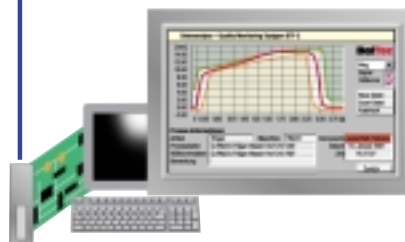
**Sensory analysis**

Path measurement system and pressure sensors for RC20 control together with Process Controller STF-1 or for Measurement data Acquisition System QMS-STF-2



**Process Controller STF 1 Super Plus**

Controls the riveting process according to a reference value, optionally according to path (s), time (t) or force (F). The reference values s, t and F are acquired on setup and stored as such. With each riveting process, the actual s, t and F process values are continuously measured and compared with the reference values.



**QMS-STF 2 (Quality Monitoring System)**

Quality monitoring software for visualizing and saving measuring data (path/time, force/time curves). Installable on standard PC with Windows operating system. Delivered with the necessary process interface.

- Compares the measured values with the preset tolerance values, envelope curve
- Can be active with tolerance overshoot. All data is logged and saved



**PDR STF 3 (Process Data Recording)**

Process data visualizing and storage of the Process Controller Data of up to 6 riveting stations on an industrial PC with touch screen. Additional possibilities:

- Online statistics of process variables, limit value monitoring, workpiece marking system
- The measured values of each riveting station are centrally saved and can be documented for quality assurance