

RN SERIES

Designed for Tabletop Use

BalTec

130 Technology Drive
 Canonsburg, PA 15317
 p. 724.873.5757 f. 724.873.5858

www.balteccorporation.com



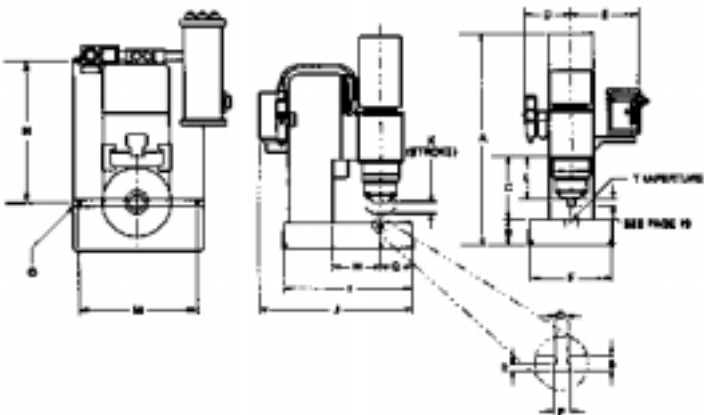
RN Series are designed for tabletop use and modularity is the key word. The RN series consists of four main components: modular power head, cast column, cast base and controller. Our flexible design means components can be eliminated to better suit your application. Each tabletop unit is complete with with pneumatic valving or hydraulic power unit. Light touch dual palm buttons in an ergonomic housing minimize operator fatigue.

Individual Models and Performance Specs (2 tables)

SERIES	RN 081	RN 181	RN 231
Shank Diameter	0.2-4mm 0.01-0.15"	0.2-6mm 0.01-0.25"	0.5-8.5mm 0.02-0.34"
Maximum Downward Force (In Pounds)	500 @ 88 psi Pneumatic	1400 @ 88 psi Pneumatic	2800 @ 88 psi Pneumatic
Stroke Length Range	2-25mm	2-25mm	2-25mm
Motor HP @ 1700 RPM	1/8	1/3	1/2
Operating Voltages Available	120V 3 x 220V 3 x 440V	120V 3 x 220V 3 x 440V	3 x 220V 3 x 440V
CFM @ 80 PSI, Max. Stroke, 10 Sec. Cycle	0.18	0.44	1.52
Machine Weight Lb. (Not Crated)	100	165	200

SERIES	RN 281	RN 331	RN 381
Shank Diameter	1-12mm 0.01-0.15"	1-16mm 0.01-0.25"	1.5-20mm 0.02-0.34"
Maximum Downward Force (In Pounds)	3800 @ 80 psi Pneumatic	7800 @ 88 psi Pneumatic	9000 @ 940 psi Hydraulic
Stroke Length Range	5-40mm	5-50mm	5-50mm
Motor HP @ 1700 RPM	3/4	1.5	1.5
Operating Voltages Available	3 x 220V 3 x 440V	3 x 220V 3 x 440V	3 x 220V 3 x 440V
CFM @ 80 PSI, Max. Stroke, 10 Sec. Cycle	2.5	4.7	N/A
Machine Weight Lb. (Not Crated)	375	575	490

Individual Dimensions



SERIES	RN 081	RN 181	RN 231	RN 281	RN 331	RN 381
A	531-628	698-848	705-855	821-971	38-112	38-113
B	70	90	90	100	110	110
C	89-186	200-350	180-330	245-395	285-470	285-470
D	152	161	161	184	204	N/A
E	135	233	233	253	299	310
F	150	260	260	320	320	350
G	75	75	75	120	125	125
H	75	130	130	1815	220	180
I	260	362	362	485	562	527
J	296	460	460	222	641	628
K	2-25	5-30	5-40	5-40	5-50	5-50
L	56-81	126-156	146-186	167-207	208-258	198-248
M	130	240	240	308	330	336
N	N/A	342	342	365	420	393
O	M8	M8	M8	M8	M10	M10
P	16	16	16	16	18	18
Q	10	10	10	10	12	12
R	7	7	7	7	8	8
S	20	15	20	20	16	16
T	30H7	30H7	30H7	30H7	40H7	40H7

All dimensions are in millimeters and are subject to change without written notice.